



How to Mark Your Kit

"What about my stuff? I can't carry it all, is the bunker going to be locked when we are not in it?" No. The overwhelming majority of reenactors are honest, they will not take your stuff because they don't want their stuff taken. Your worry is when you lose stuff, or drop stuff. If we find a canteen, or a bayonet in the trenches, most of us will try and find the owner, but since there are 300-400 German reenactors in the trenches, and all our stuff is of a few patterns, how do you find the owner? Easy, put your name and unit on it.

After one event I found a M1910 Prussian Mütze laying in the road. Nothing unique about it. But when I looked inside, it was stamped with the unit so it was simple exercise to walk to that unit's bunker to return it.

There are three methods of marking your kit in a period manner: cloth tags, paper tags, and simply painting your name onto the item.



Original fabric tag on the left, sample tag image for stamping new ones on the right.



Original fabric crudely whipped stitched into a garment.



Original paper tag glued to the inside of a *Pickelhaub*.





Example of the owner's name painted inside the flare of the helmet. In the case of other metal items, like gas mask cans, cups, messkits, etc. the name should be painted on the bottom.

Example of the owner's name painted inside the flare of the helmet. In the case of other metal items, like gas mask cans, cups, messkits, etc. the name should be painted on the bottom.



Original cloth and paper tags were created using stamps and permanent ink. This day and age, we can print paper labels on laser printers, and I can also print you fabric labels on printable fabric. Paper labels are free, printable fabric is expensive, plus I had to purchase a printer to do it, so a half sheet of fabric labels (12) will cost \$9. If you prefer to do it in a more authentic manner, I can get you a rubber stamp made for less than \$20 but you will have to find your own permanent ink pad.

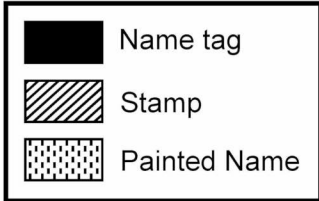


How to Mark Your Kit

by Randall Chapman and Marsh Wise

Enclosed you will find your German name tags. The cloth tags are sewed into articles such as your Feldbluse, Feldmütze, Brotbeutel, etc. The paper tags are to be glued to the leather items. To sew these tags on, simply fold the outer edges under just outside the diamond border, and whip stitch them on.

[Note: The art on this page is for the Reichswehr - from what the author can determine, it is much the same for WWI]



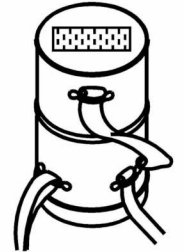
Schirmmütze



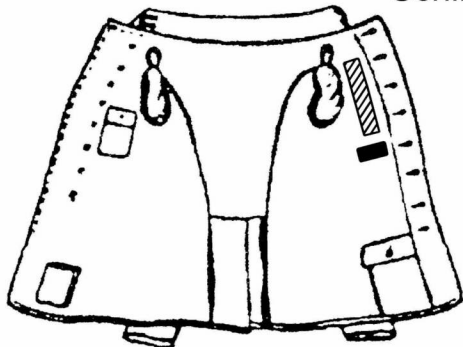
Feldmütze



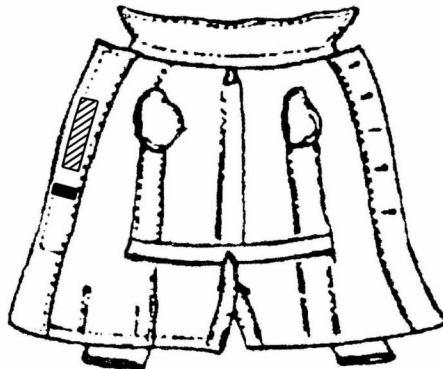
Stahlhelm



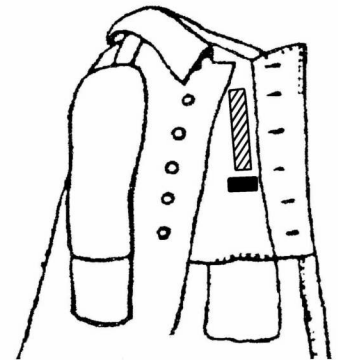
Bereitschaftsbüchsen



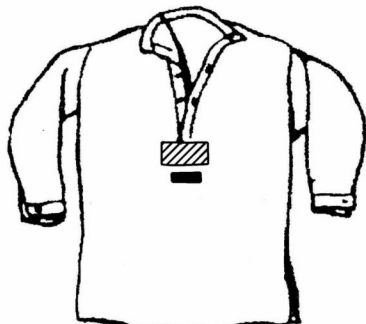
Feldbluse



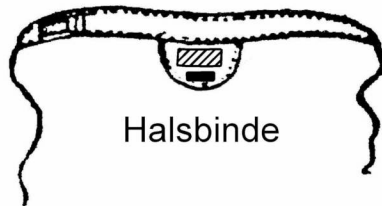
Drillichrock



Mantel



Hemd



Halsbinde



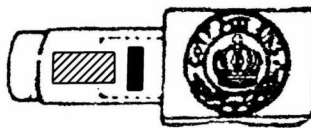
Seitengewehr-tasche



Troddel



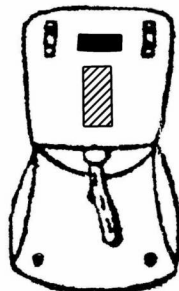
Trinkbecher



Koppelschloß



Unterwäsch-ausruf



Brotbeutel

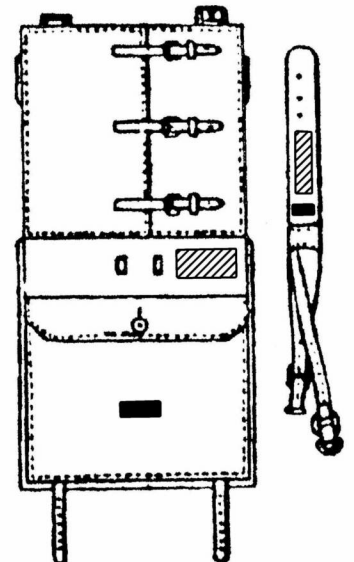


Schnurshuhe

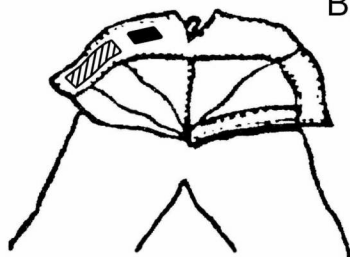
Name tag



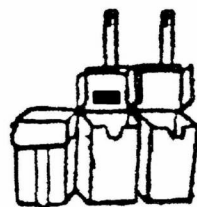
Koppel



Tornister



Feldhosen



Patronentasche



Marschstiefel